



HERBERT  
SMITH  
FREEHILLS

# EU REGULATION CAPABILITY STATEMENT

IN-DEPTH UNDERSTANDING OF EU INSTITUTIONS  
AND MULTI-SECTOR KNOWLEDGE



The EU is at the origin of an ever-increasing amount of complex regulation, which can be general or sector-specific. EU Regulation is implemented and enforced by European and national administrations, often raising challenging legal questions.

Our EU law specialists have extensive experience advising across a broad range of EU regulatory rules, including those pertaining to energy, TMT and digital, pharma, consumer goods, financial services, chemicals, and public procurement, amongst others.

We advise clients on the interpretation and practical application of complex EU legislation, relying on our broad experience in EU regulatory matters across sectors. We also guide clients in

their engagement with regulators and legislators in relation to EU and national proposals, including drafting submissions in response to public consultation processes and regulatory assessments.

We have extensive experience representing parties before the Court of Justice of the European Union and the General Court of the EU in both direct and indirect actions. Collectively, the team has been involved in hundreds of cases before the EU courts – this makes our team one of the most skilled to guide clients through the EU's increasingly complex regulatory framework.

Our Brussels team works seamlessly with EU law specialists in our offices in France, Germany, Spain, Italy and the UK.

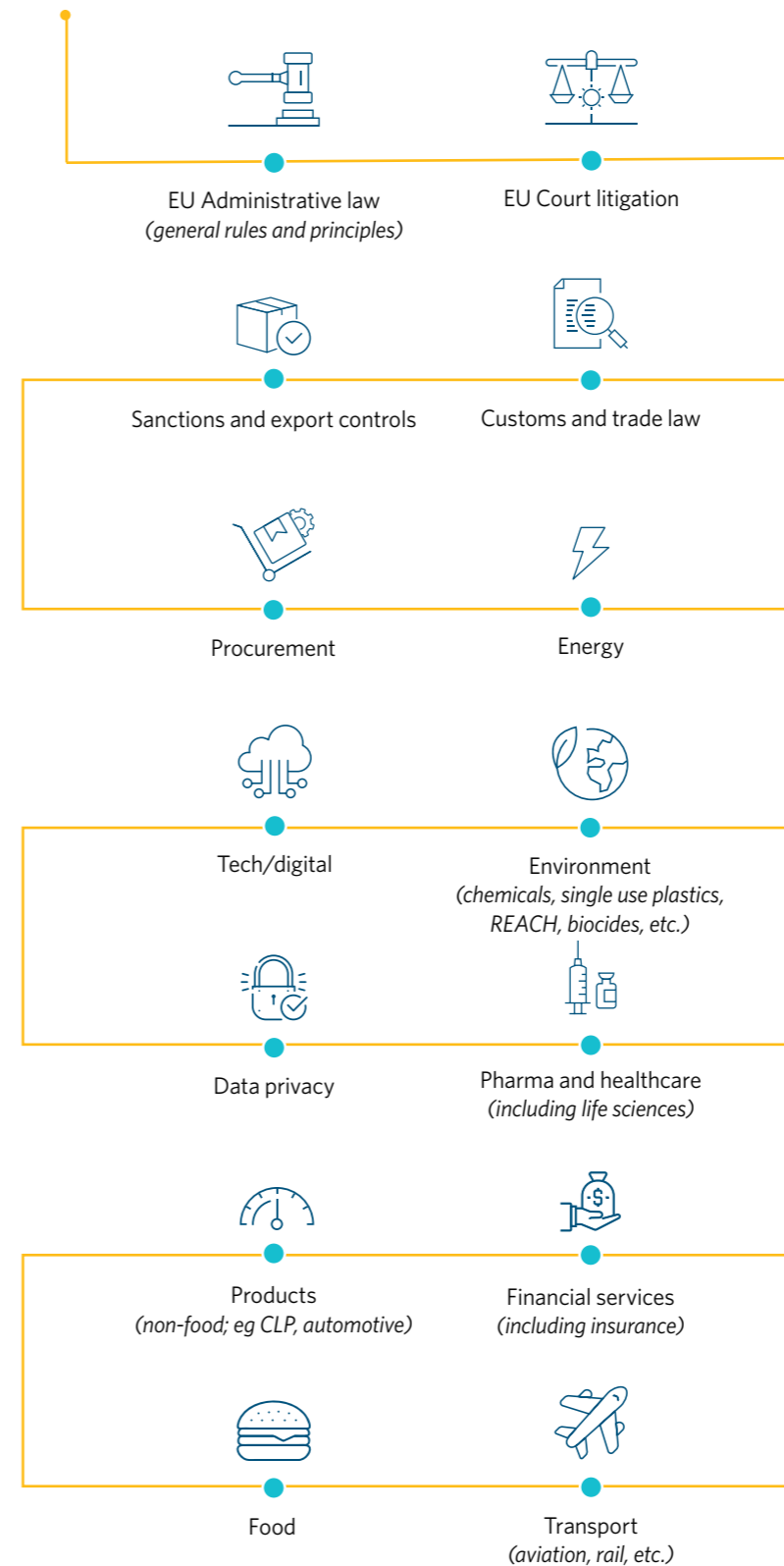
### Brussels Hub

Based in the heart of Europe for over 30 years, our Brussels office acts as the hub of our EU law practice.

Our team has an excellent understanding of the workings of the EU, drawing on the experience of former secondees, officials and judges at the European Commission and EU courts. Our team includes:

- Brussels office managing partner **Kyriakos Fountoukakos**, a former European Commission official and Référendaire at the EU General Court;
- Partner **Lode Van Den Hende**, with previous involvement in EU Treaty negotiations and 25 years' experience in EU regulation and court proceedings.
- Consultant **Bo Vesterdorf**, one of the most respected experts on the international competition circuit and a former President of the EU General Court; and
- Consultant **Eric White**, a former senior member of the European Commission's Legal Service, who has over 35 years' experience in EU, trade and WTO law.

### Our expertise – EU areas of law



"THE TEAM IN BRUSSELS PROVIDES A WEALTH OF EXPERIENCE ON EU REGULATORY MATTERS AND A DEEP KNOWLEDGE OF HOW THE LEGAL AND OTHER DEVELOPMENTS IN EU INSTITUTIONS IMPACT INDUSTRIES SUBJECT TO EU LAW. THEY PROVIDE BUSINESS-MINDED ANALYSIS TO APPLY LEGAL RULES TO ACHIEVE COMMERCIAL GOALS."

LEGAL 500 EMEA 2021, BELGIUM  
- EU & COMPETITION

"THE TEAM IS VERY WELL CONNECTED TO THE RELEVANT KEY PEOPLE FOR ANY QUERY NEEDED ANYWHERE IN THE WORLD. THEY ARE EXTREMELY KNOWLEDGEABLE IN THEIR FIELD FROM A REGULATORY AND PRACTICAL POINT OF VIEW, AND VERY COMMERCIAL-DRIVEN IN THEIR ADVICE."

LEGAL 500 EMEA 2021, FRANCE -  
DATA PRIVACY & DATA  
PROTECTION

"THE TEAM HAS A GOOD COMBINATION OF EXPERTISE IN ADMINISTRATIVE LAW / REGULATION IN THE ENERGY SECTOR AND EXPERTISE IN COMMERCIAL ASPECTS TO PROVIDE THE MOST COMPLETE VISION IN M&A OPERATIONS, AS WELL AS IN RISK MITIGATION ISSUES IN THE FACE OF REGULATORY DEVELOPMENTS."

LEGAL 500 EMEA 2022, SPAIN  
- PROJECTS & ENERGY

"SOLID EXPERIENCE IN THE PHARMA AND LIFE SCIENCE SECTOR, AND ASSISTING IMPORTANT CLIENTS WITH COMPLEX ACCESS, PATENTS AND REGULATORY ISSUES."

LEGAL 500 EMEA 2022, ITALY  
- HEALTHCARE & LIFE SCIENCES



## Key contacts

## Brussels



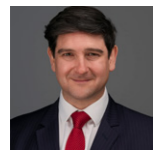
**Kyriakos Fountoukakos**  
Partner  
T +32 2 518 1840  
[kyriakos.fountoukakos@hsf.com](mailto:kyriakos.fountoukakos@hsf.com)

**Areas of expertise:** EU court litigation, tech/digital, pharma and healthcare



**Lode Van Den Hende**  
Partner  
T +32 2 518 1831  
[lode.vandenhende@hsf.com](mailto:lode.vandenhende@hsf.com)

**Areas of expertise:** EU administrative law, EU court litigation, customs and trade law, sanctions and export controls, energy, environment, tech/digital, products, food



**Peter Rowland**  
Of Counsel  
T +32 2 518 1847  
[peter.rowland@hsf.com](mailto:peter.rowland@hsf.com)

**Areas of expertise:** tech/digital



**Eric White**  
Consultant  
T +32 2 518 1826  
[eric.white@hsf.com](mailto:eric.white@hsf.com)

**Areas of expertise:** EU administrative law, EU court litigation, customs and trade law, sanctions and export controls



**Bo Vesterdorf**  
Consultant  
T + 32 2 511 7450  
[bo.vesterdorf@hsf.com](mailto:bo.vesterdorf@hsf.com)

**Areas of expertise:** EU administrative law, EU court litigation



**Adrian Brown**  
Consultant  
T +32 2 518 1822  
[adrian.brown@hsf.com](mailto:adrian.brown@hsf.com)

**Areas of expertise:** procurement

## Paris



**Jonathan Mattout**  
Partner  
T +33 1 53 57 76 77  
[jonathan.mattout@hsf.com](mailto:jonathan.mattout@hsf.com)

**Areas of expertise:** sanctions and export controls



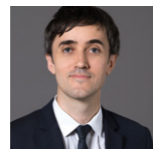
**Mathias Dantin**  
Partner  
T +33 1 53 57 65 48  
[mathis.dantin@hsf.com](mailto:mathis.dantin@hsf.com)

**Areas of expertise:** energy



**Vincent Hatton**  
Partner  
T +33 1 53 57 70 85  
[vincent.hatton@hsf.com](mailto:vincent.hatton@hsf.com)

**Areas of expertise:** financial services



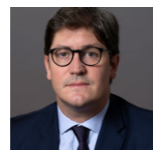
**Sergio Sorinas**  
Partner  
T +33 1 53 57 76 77  
[sergio.sorinas@hsf.com](mailto:sergio.sorinas@hsf.com)

**Areas of expertise:** EU administrative law



**Alexandra Neri**  
Partner  
T +33 1 53 57 78 30  
[alexandra.neri@hsf.com](mailto:alexandra.neri@hsf.com)

**Areas of expertise:** data privacy, tech/digital



**Martin Le Touzé**  
Partner  
T +33 1 53 57 73 72  
[martin.letouze@hsf.com](mailto:martin.letouze@hsf.com)

**Areas of expertise:** financial services (insurance)



**Frederic Chevallier**  
Partner  
T +33 1 53 57 13 60  
[frederic.chevallier@hsf.com](mailto:frederic.chevallier@hsf.com)

**Areas of expertise:** pharma and healthcare

## Germany



**Dr Marius Boewe**  
Partner  
T +49 211 975 59066  
[marius.boewe@hsf.com](mailto:marius.boewe@hsf.com)

**Areas of expertise:** sanctions and export controls, energy, environment, data privacy, transport



**Heike Schmitz**  
Partner  
T +49 211 975 59012  
[heike.schmitz@hsf.com](mailto:heike.schmitz@hsf.com)

**Areas of expertise:** financial services (insurance)



**Kai Liebrich**  
Partner  
T +49 69 2222 82541  
[kai.liebrich@hsf.com](mailto:kai.liebrich@hsf.com)

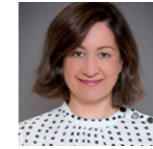
**Areas of expertise:** financial services



**Ina vom Feld**  
Partner  
T + 49 211 975 59091  
[ina.vomfeld@hsf.com](mailto:ina.vomfeld@hsf.com)

**Areas of expertise:** pharma and healthcare

## Madrid



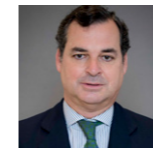
**Iria Calviño**  
Partner  
T +34 91 423 4091  
[iria.calvino@hsf.com](mailto:iria.calvino@hsf.com)

**Areas of expertise:** procurement, energy, environment, transport



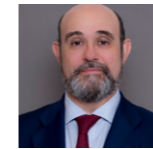
**Henar González Durántez**  
Partner  
T +34 91 423 4016  
[henar.gonzalez@hsf.com](mailto:henar.gonzalez@hsf.com)

**Areas of expertise:** food



**Leopoldo Gonzalez Echenique**  
Partner  
T + 34 91 423 41 17  
[leopoldo.gechenique@hsf.com](mailto:leopoldo.gechenique@hsf.com)

**Areas of expertise:** financial services



**José Ramón Mourenza**  
Of Counsel  
T +34 91 423 4006  
[joseramon.mourenza@hsf.com](mailto:joseramon.mourenza@hsf.com)

**Areas of expertise:** energy



**Esther Lumbreras**  
Of Counsel  
T +34 91 423 4089  
[esther.lumbreras@hsf.com](mailto:esther.lumbreras@hsf.com)

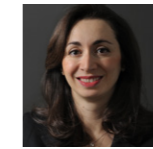
**Areas of expertise:** procurement



**Pablo García Mexía**  
Consultant  
T +34 91 423 4010  
[pablo.garciamexia@hsf.com](mailto:pablo.garciamexia@hsf.com)

**Areas of expertise:** tech/digital

## Milan



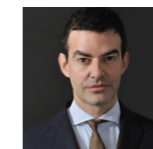
**Laura Orlando**  
Partner  
T +39 02 3602 1371  
[laura.orlando@hsf.com](mailto:laura.orlando@hsf.com)

**Areas of expertise:** pharma and healthcare, customs and trade law



**Francesca Morra**  
Partner  
T +39 02 3602 1412  
[francesca.morra@hsf.com](mailto:francesca.morra@hsf.com)

**Areas of expertise:** EU administrative law, energy



**Pietro Pouché**  
Partner  
T +39 02 3602 1394  
[pietro.pouche@hsf.com](mailto:pietro.pouche@hsf.com)

**Areas of expertise:** data privacy, products, food



**Sara Balice**  
Of Counsel  
T +39 02 3602 1403  
[sara.balice@hsf.com](mailto:sara.balice@hsf.com)

**Areas of expertise:** pharma and healthcare

## London



**Silke Goldberg**  
Partner  
T + 44 20 7466 2612  
[silke.goldberg@hsf.com](mailto:silke.goldberg@hsf.com)

**Areas of expertise:** energy



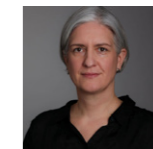
**Miriam Everett**  
Partner  
T +44 20 7466 2378  
[miriam.everett@hsf.com](mailto:miriam.everett@hsf.com)

**Areas of expertise:** data privacy



**Hayley Brady**  
Partner  
T +44 20 7466 2079  
[hayley.brady@hsf.com](mailto:hayley.brady@hsf.com)

**Areas of expertise:** tech/digital



**Susannah Cogman**  
Partner  
T +44 20 7466 2580  
[susannah.cogman@hsf.com](mailto:susannah.cogman@hsf.com)

**Areas of expertise:** sanctions and export controls



**Sebastian Moore**  
Partner  
T +44 207 466 2801 (London)  
[sebastian.moore@hsf.com](mailto:sebastian.moore@hsf.com)

**Areas of expertise:** pharma and healthcare



**Kim Dietzel**  
Partner  
T +44 20 7466 2387  
[kim.dietzel@hsf.com](mailto:kim.dietzel@hsf.com)

**Areas of expertise:** transport



**Jenny Stainsby**  
Partner  
T +44 20 7466 2995  
[jenny.stainsby@hsf.com](mailto:jenny.stainsby@hsf.com)

**Areas of expertise:** financial services



**Barnaby Hinnigan**  
Partner  
T +44 20 7466 2816  
[barnaby.hinnigan@hsf.com](mailto:barnaby.hinnigan@hsf.com)

**Areas of expertise:** financial services (insurance)

For a full list of our global offices visit [HERBERTSMITHFREEHILLS.COM](https://www.herbertsmithfreehills.com)

---